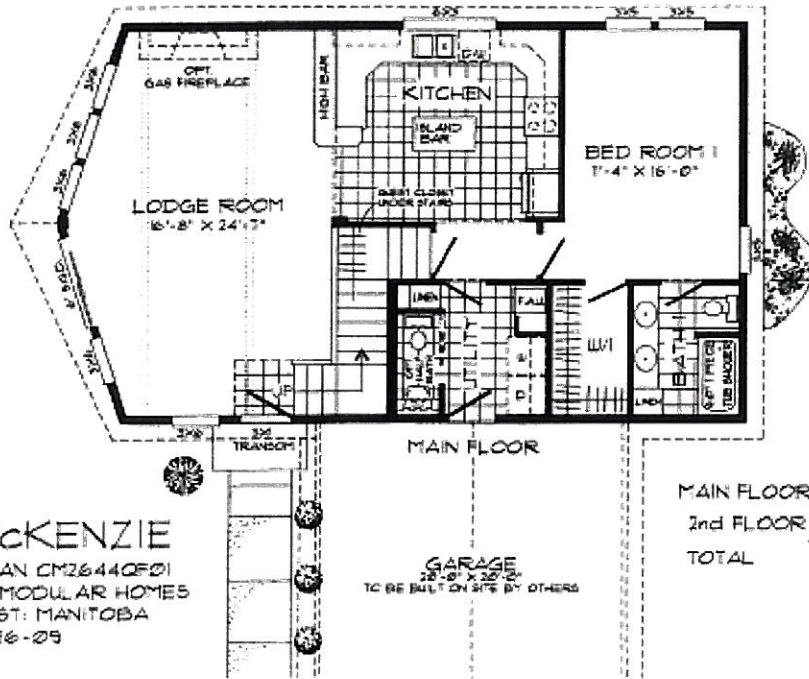
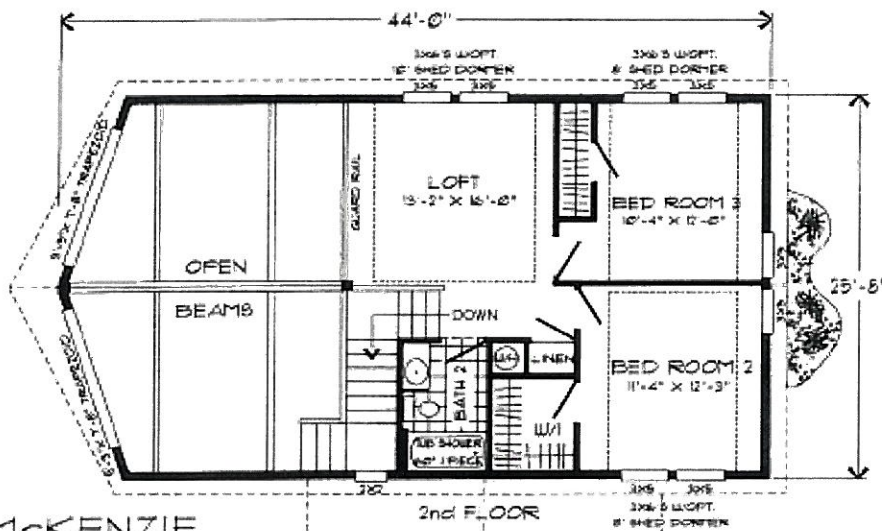


VI MODULAR HOMES Ltd.



McKENZIE
 PLAN CM2644QF01
 VI MODULAR HOMES
 CUST: MANITOBA
 8-26-09

MAIN FLOOR 1073 SQ FT
 2nd FLOOR 672 SQ FT
 TOTAL 1751 SQ FT



McKENZIE
 PLAN CM2644QF01
 VI MODULAR HOMES
 CUST: MANITOBA
 8-26-09

MAIN FLOOR 1073 SQ FT
 2nd FLOOR 672 SQ FT
 TOTAL 1751 SQ FT

9534 TRANS CANADA HWY
 CHEMAINUS
 250-324-2288

